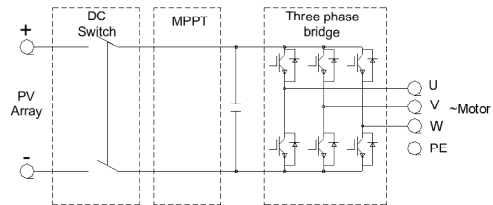


Solar Pumping Inverter- Three Phase



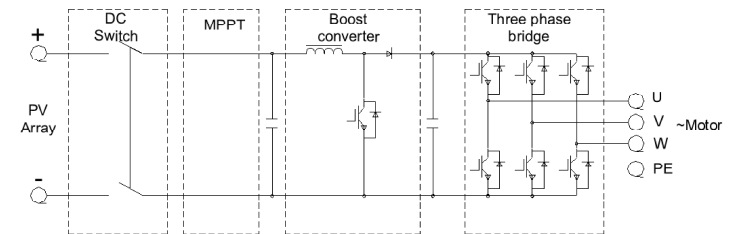
Circuit Topology



H series main circuit topology

Technical Parameters

Model	JNP75KH	JNP90KH	JNP110KH	JNP132KH
d.c. Input				
d.c. Max. Input Voltage	880Vdc			
Recommended MPPT Voltage	460~850Vdc			
d.c. Max. Input Current	166A	205A	251A	287A
Max. MPPT Efficiency	99%			
Number of String	2	2	2	2
a.c. Output				
Max. Applicable Motor Output Power	75kW	90kW	110kW	132kW
Rated Output Voltage	380~460Vac,three phase			
Output Frequency Range	0~50/60Hz			
Rated Output Current	142A	171A	209A	251A
Other Parameters				
Weight	190kg	220kg	220kg	220kg
Dimension(L*W*H)	654*1210*465mm			
Max. Efficiency	98%			
Protection Class	I			
Protection Level	IP21			
Operating Temperature	-25 C~+50 C ; above 50 C need derate operating			
Cooling Way	Force Cooling			
Display	LCD			
Communication	RS485/GPRS			
Altitude	3000m;above 3000m need derate operating			
Noise Emission	< 70dB			
Compliance	EN50178;IEC/EN62109-1;IEC 61800			



L series main circuit topology